

🌐 www.wcsiplt.com

🌐 www.wcsiplt.net



CORPORATE OFFICE ADDRESS

Plot No. 32, D-2 Block, Opp. HDFC Colony, Chinchwad, Pune - 411019, Maharashtra, India.

FACTORY ADDRESS

Sector No. 10, Plot No. 157/1, PCNTDA, MIDC, Bhosari, Pune - 411026, Maharashtra, India.

CONTACT DETAILS

📞 9881719453 (Director) | 📞 7720032487 (Office) | 📞 020 29985411

✉️ yogiraj@wcsiplt.com | ✉️ sales@wcsiplt.com | ✉️ info@wcsiplt.com

Weather Controlling Solutions
India Pvt Ltd

www.wcsiplt.net

“

ENERGY EFFICIENT, COST EFFECTIVE SOLUTIONS

We are focused in delivering the advanced
technology solutions to our client

15
Years



WCSIPL
Climate control is in your hand

15
Years

ABOUT US

Weather Controlling Solutions India Pvt Ltd (WCSIPL), established in 2008, has made significant strides in the HVAC, MEP, EPC, and Fire solutions industry. Their expertise spans HVAC, Fire, Electrical, and Plumbing, and they've completed over 500 projects, demonstrating their experience and capabilities. WCSIPL's expansion from HVAC to MEP, EPC, and Fire projects showcases their commitment to diversification and client-centric solutions.

Their meticulous design process, double verification, and focus on critical designs highlight their dedication to providing efficient solutions. Additionally, their emphasis on sustainability and efficiency further underscores their commitment to quality.

WCSIPL's versatility is evident in their ability to handle diverse needs, from air conditioning to humidity and dust control solutions. They excel in process cooling solutions and offer a comprehensive range of services in fire-fighting, piping, utility piping, and plumbing. Moreover, WCSIPL's provision of Annual Maintenance and Operations Contracts reflects their dedication to long-term system functionality. They specialize in executing large-scale projects for critical industrial applications, showcasing their adaptability and prowess in the field.

In summary, WCSIPL's journey and accomplishments demonstrate a strong commitment to growth, expertise, and customer satisfaction in HVAC, MEP, EPC, and Fire solutions. Their ability to cater to various industries and focus on efficiency and sustainability positions them for continued success.



THE WEALTH OF KNOWLEDGE

Our Leadership Director	1
Our Story	3
Mission Goal	4
Milestones	5
Our Solutions	7
Our Services Process Cooling Offering	8
Organisation Chart	9
Repeated Trusted Projects	11
Why Us	12
Infrastructure	13
Capabilities	15
Proudly Served	17
Solution Based Project	19
Case Study	23
Our Execution Approach	25
Site Team Organisation Chart	26
Project Erection Equipment's	27
Our Filing Process We Follow	28
Project Schedule and Tracking	29
Our Site Setup	30
Our Awesome Work	31
Our Installation Gallery	34
Our Clientele	89

Our Leadership

DIRECTOR



Yogiraj Chopade | BE Mechanical

Yogiraj Chopade's journey from a young design engineer to the visionary leader behind Weather Controlling Solutions India Pvt Ltd (WCSIPL) is an inspiring narrative of innovation and determination. Even during his early days in an HVAC company, Yogiraj harbored a desire to create something distinctive. While established HVAC companies predominantly focused on comfort applications, Yogiraj's inclination was towards the process application and critical design aspects of the industry. His keen insight revealed a gap in expertise, specifically for process application, industrial ventilation, and critical design application, which sowed the seeds for his brainchild, Extreme HVAC, later rebranded as WCSIPL.

With almost a decade of experience in handling substantial projects, WCSIPL has honed its skills and expertise under Yogiraj's leadership. The company's unwavering commitment lies in employing innovative design techniques to deliver solutions that not only save power, energy, and cost for clients but also create enduring industry ventilation and process application solutions.

Mr. Yogiraj Chopade's proficiency extends beyond HVAC as he has acquired expertise in MEP, EPC, and Fire project designing, planning, and execution. Over the past three years, he has concentrated his efforts on expanding the company's reach across various sectors. His close collaborations with architectural firms, structural engineering teams, electrical panel manufacturers, electrical wiring execution teams, civil construction experts, and other design agencies underline his commitment to achieving excellence in EPC, MEP, and Fire executions.

Yogiraj Chopade's journey is emblematic of a leader who not only identified a niche in the market but also took bold steps to fill it with innovative solutions. His drive to continuously expand his company's capabilities and collaborate with experts across various domains underscores his dedication to creating holistic and impactful solutions for the industry.

Our Leadership

DIRECTOR



Aparna Chopade | BE Mechanical

Aparna Chopade's journey within Weather Controlling Solutions India Pvt Ltd (WCSIPL) is a testament to her significant contributions and expertise. Since joining the company in 2008, her background as a mechanical engineer (BE Mechanical) has played a crucial role in enhancing WCSIPL's capabilities.

With a wealth of experience in 3D modeling, 3D drafting, and designing, Aparna Chopade has proven to be a valuable asset to WCSIPL. Her proficiency in these areas has not only contributed to the company's design capabilities but has also played a pivotal role in strengthening its overall understanding of complex design aspects.

Under Aparna Chopade's leadership, the design team at WCSIPL has flourished. Her guidance and expertise have been instrumental in shaping the team's efforts to create unique and effective solutions for large-scale projects. Her skillset, combined with her experience, has likely enabled the team to approach projects with creativity, precision, and innovation.

Aparna Chopade's role in leading the robust design team showcases her commitment to excellence and her ability to drive impactful outcomes. Her efforts are undoubtedly a cornerstone of WCSIPL's success, as her expertise has likely been integral to the company's ability to deliver high-quality solutions in the field of HVAC, MEP, EPC, and Fire.

In essence, Aparna Chopade's journey and contributions within WCSIPL highlight her as a skilled professional who has played a significant role in shaping the company's design capabilities and its capacity to provide innovative

OUR STORY

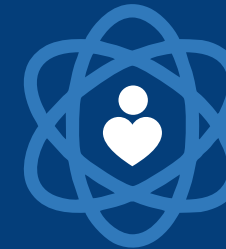
A young and dynamic design engineer and project manager took a bold decision and started WCSIPL. It was known as 'Extreme HVAC' back then. Till 2012 the company focused on niche projects that needed critical applications development and deployment. WCSIPL's core values of professional service, timely delivery and focus on customer satisfaction led to building a strong base of customers.

On the other hand our work attracted experienced professionals in the HVAC industry. After 2012, there was no looking back as the company bagged some important large scale projects to make a mark for themselves. Today WCSIPL is a trusted name in the field of HVAC, process cooling and industrial ventilation.



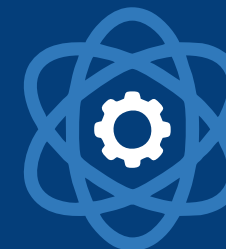
MISSION / GOAL

CORE IDEOLOGY



Core Value

- Responsible to create Healthy working Environment
- Customer Satisfaction
- Never Quality Compromise
- Fastest Execution
- Providing The Great Value Always



Core Purpose

Delivering systems that enhance work environments, foster control, ensure accuracy, minimize rejections, and ultimately contribute to our client's profitability.

ENVISIONED FUTURE



Mission

We will be India topmost choice to deliver controlled environmental enclosure

Vivid Description

We will have operations at various geographic location all over India. Our company will have world class facility which always deliver improved environment and enclosure at fastest way. Twenty years from now, we are the first choice with valuations of 1000 Cr

MILESTONES

2008

Commenced our journey with the establishment of the York Dealership.



2010

Secured a significant order from the food processing industry, marking a milestone of 2.1 lakh



2015

Achieved a significant milestone with the first major order of 2.5 Cr from a well-known snack industry.



2018

Received a Rs. 2.5 Cr order from Getrag Transmission, a Ford Group Company, and a second order of Rs. 3 Cr from Whirlpool.



WCSIPL New Factory Inauguration
5500 Sq Ft.



2023

Completed first MEP project for a 5500 sq. ft. corporate office and installed a brine chilling plant at -4°C with stainless steel piping.



2022

WCSIPL expanded further Corporate Office
covering 5500 Sq Ft



2011

First Own Office
1000 Sq. ft Inaugurated

Expanded to a 1000 sq. ft. office, grew the team to 20, and forged a pivotal partnership with Warana as a key account



2014

Diversified into HVAC turnkey projects.



2013

Formed a strategic association with Mitsubishi for Air Conditioning and secured a dealership with Kirloskar Chillers Pvt Ltd



2019

Secured a Rs. 7 Cr order from Sanjay Ghodawat Group, implementing a Platinum-rated green building HVAC system for Enpro Industries.



2020

Received a single order of 9 Cr for VW 2.0 Expansion in collaboration with ATE Business partner.



2021

Secured a record 22 Cr order from Nordex, expanded with a 5000 TR corporate office (5500 sq. ft.), and underwent a brand reformation.



OUR SOLUTIONS



COMFORT

- Cross ventilation
- Central exhaust
- Spot cooling and side exhaust
- Hot and cold zone concept
- Ductless with HVLS
- Positive air system
- Fabric duct concept
- Opposed header system
- Opposed common header system
- Periphery header and central exhaust
- Central intake and periphery header exhaust
- Central intake and side wall propeller exhaust
- Uniform distribution and down riser exhaust
- Down riser fresh air and roof exhaust

Direct
Expansion
System

Central
Chiller
Plant

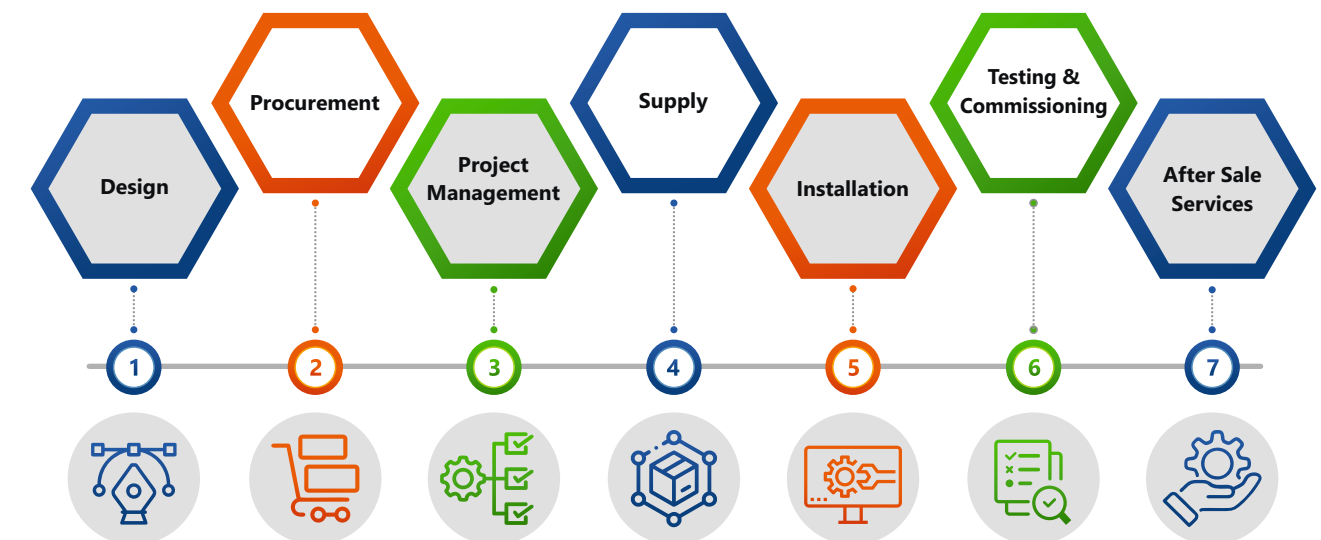
Single
Stage
Evaporative

Two
Stage
Evaporative

Direct
Indirect
Evaporative
Cooling

Indirect
Evaporative
With Coil

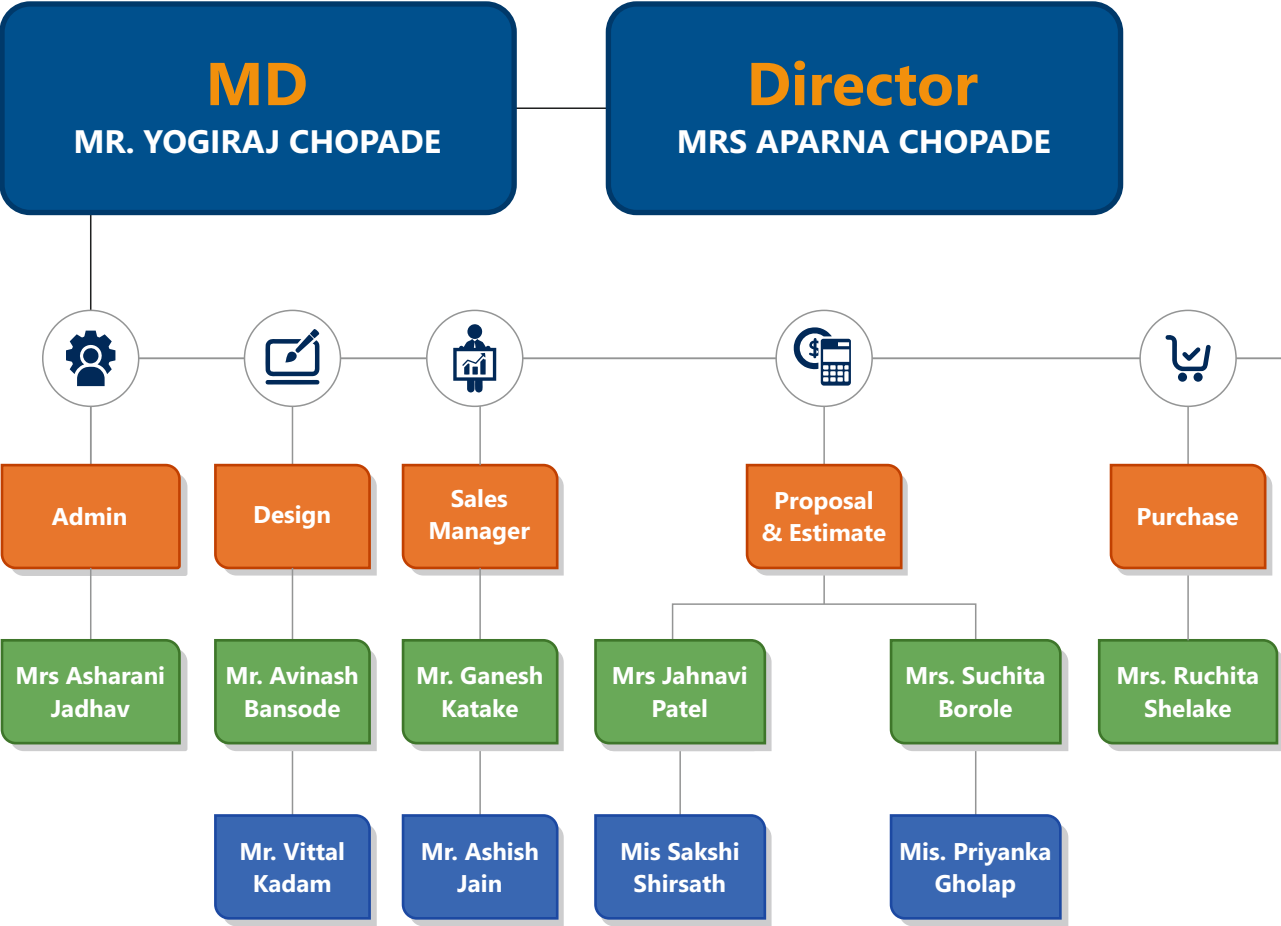
OUR SERVICES



PROCESS COOLING OFFERING

- | | |
|---|-----------------------------------|
| 1 Pasteurization | 22 Cooling for Reactor Jacketing |
| 2 Yogurt Fermentation | 23 Sheet & Film Production |
| 3 Chilling and Cold Storage | 24 Calendering |
| 4 IQF (Individually Quick Frozen) | 25 Rotational Molding |
| 5 Extrusion Cooling | 26 Plastic Coating & Laminating |
| 6 Heat Removal in Reactions | 27 Compounding & Pelletizing |
| 7 Condensation & Evaporation | 28 Injection Molding |
| 8 Stamping & Forming | 29 Tablet & Capsule Manufacturing |
| 9 Painting and Coating | 30 Lyophilization (Freeze Drying) |
| 10 Machining & Metalworking | 31 Packaging and Labeling |
| 11 Drug Manufacturing and Formulation | 32 Brewing |
| 12 Biotechnology & Bioprocessing | 33 Bottling |
| 13 Active Pharmaceutical Ingredient (API) Synthesis | 34 Rotational Molding |
| 14 Plastic and Rubber Processing | 35 Vaccine Production |
| 15 Freezing | 36 Extrusion |
| 16 Dough Cooling | 37 Chocolate Coating |
| 17 Chocolate Tempering | 38 Blow Molding |
| 18 Refrigeration for Cryogenic Processes | 39 Pastry Filling |
| 19 Solvent Recovery | 40 Thermoforming |
| 20 Crystallization and Precipitation | 41 Injection Molding |
| 21 Polymer Processing | 42 Freezing |

ORGANISATION CHART



REPEATED TRUSTED CLIENTS

 <div>NO OF PROJECTS: 10</div>	 <div>NO OF PROJECTS: 7</div>	 <div>NO OF PROJECTS: 5</div>
 <div>NO OF PROJECTS: 5</div>	 <div>NO OF PROJECTS: 4</div>	 <div>NO OF PROJECTS: 2</div>
 <div>NO OF PROJECTS: 4</div>	 <div>NO OF PROJECTS: 4</div>	 <div>NO OF PROJECTS: 4</div>
 <div>NO OF PROJECTS: 4</div>	 <div>NO OF PROJECTS: 4</div>	 <div>NO OF PROJECTS: 3</div>
 <div>NO OF PROJECTS: 3</div>	 <div>NO OF PROJECTS: 3</div>	 <div>NO OF PROJECTS: 3</div>
 <div>NO OF PROJECTS: 2</div>	 <div>NO OF PROJECTS: 2</div>	 <div>NO OF PROJECTS: 2</div>
 <div>NO OF PROJECTS: 2</div>	 <div>NO OF PROJECTS: 2</div>	 <div>NO OF PROJECTS: 2</div>
 <div>NO OF PROJECTS: 3</div>	 <div>NO OF PROJECTS: 2</div>	 <div>NO OF PROJECTS: 2</div>
 <div>NO OF PROJECTS: 3</div>	 <div>NO OF PROJECTS: 2</div>	

WHY US

We believe in providing comprehensive and custom solutions based on the client needs and business necessities. Our focus is on providing a solution that is cost effective, long lasting and is the most viable solution available out there. WCSIPL HVAC & R solutions can be incorporated right from the designing stage of a building to generate an ideal internal climate, ensuring higher employee productivity and utilization of optimum production capacity.

Our team of experts survey the implementation site and understand the details like nature of business, volumes to be handled, background etc. Based on these inputs, our design team creates critical application based designs that undergo a two-step verification process. The design is verified with manual calculations and psychometric charts.

We follow all the industrial standards like ASHRAE/ ISHRAE & SMACNA standards, apart from ISI, during the design and execution process. Safety is paramount at WCSIPL. We have crossed millions of safe working hours during execution. Our project team is equipped with scissor lifts, boom lift and all the necessary safety equipment's during the execution. A portable site office and portable store is set-up by WCSIPL to ensure smooth project management.

WE OFFER COMPREHENSIVE SOLUTIONS IN THE FOLLOWING AREAS



COMFORT
APPLICATION



PROCESS
APPLICATION



INDUSTRIAL
VENTILATION



FIRE



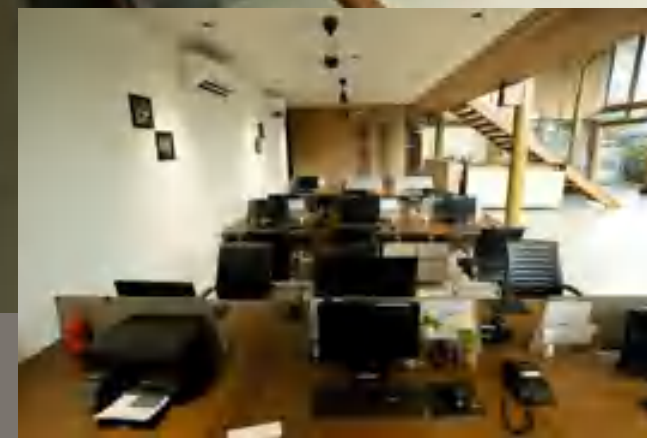
MEP



EPC

INFRASTRUCTURE

WCSIPL has come a long way in the past fifteen years since inception. Today our corporate office spread over 6000 sq. ft is managed by a staff of over 50 experts. We also have a manufacturing set-up of 5500 (sq. ft)



WCSIPL believes in strong processes and every project big or small gets equal attention. A huge inventory of machinery to work on various heights with complete safety along with detailed knowledge of safety and project management makes us a perfect fit for large scale projects.

We have successfully executed single projects valued Rs. 22 crore and can easily handle single projects valued Rs. 50 crore

PROFESSIONAL RELIABLE SOLUTIONS

Rely on us when looking for smart professional solutions

CAPABILITIES

Throughout our history we have provided HVAC & MEP solutions to some of the world's major manufacturers and industrial companies. Our technical proficiency and understanding of the HVAC systems ensures we can handle any scale of project.

Some of our numbers that speak for us



Associated Panel	
• Electrical Panel Manufacturing	• Structural Consultant
• Architects	• Civil Engineer
• Interior Designer	• MEP Consultant



PROUDLY SERVED



Two stage evaporative cooling with capacity- 1100000CFM for body shop, engine shop, PT shed and CVA.



Whirlpool India Ltd, Ranjangaon- 15000000 CFM single stage evaporative cooling.



Getrag Transmission India Pvt Ltd, Sanand- 240000 CFM two stage evaporative cooling.



Nordex manufacturing India Pvt Ltd, Chennai. India's top wind mill mfg company.- 5000TR Kirloskar chiller plant, VRF, DX AHU etc.



Enpro industries Pvt Ltd, Platinum rated green building, Chinchwad, Pune. 200HP VRF and 210000CFM two stage evaporative cooling



Sanjay Ghodawat Group, Kolhapur. 500TR Daikin chiller plant and DX AC for tetra pak.

PROUDLY SERVED



SOLUTION BASED PROJECT

E OFFICE AIR CONDITIONING

- 54. Cadbury India Limited- 110 TR
- 55. Laxmi Snacks Pvt Ltd- 46 Hp VRF- Mitsubishi
- 56. Agri Pure Industries – 38 HP Office- O General VRF
- 57. Enpro Industries Markal- 100 HP Mitsubishi
- 58. Enpro Industries Pimpri- 100 HP Mitsubishi
- 59. Superdry Showroom- Phoenix Mall Viman Nagar
- 60. Marvel Diva Site, Pune- 150 HP Samsung
- 61. Marvel Zephyr Site- 500 HP Samsung
- 62. Marvel Edge Office bdg Viman Nagar- 150 HP LG
- 63. Marvel Edge Cafeteria- Viman Nagar- 50 HP LG
- 64. MAHLE Behr India Private Limited- chakan- Magnetic Bearing 150 Tr- Office AC
- 65. Enpro Industries Pvt Ltd Pune 130000 CFM -30000 Sq.ft. Office & Canteen Area
- 66. Barzilla Club- 45 HP Daikin VRF- Baner Pune
- 67. Grand View Research- 100 HP Daikin VRV system
- 68. CIE Automotive India Pvt Ltd- 40 HP -Mitsubishi VRF System
- 69. Steepgraph- Baner- 110 HP- LG VRF Air Conditioning- Baner, Pune

F CLEAN ROOM SYSTEMS

- 70. Warana Sahakari Dudh Utpadak Sangh- Kolhapur- 10000 Class & 100000 Class
- 71. Forms And surfaces- Lonikand- Class 100000
- 72. Philips India Limited- Class 100000
- 73. Nutrivita Foods- Shivare Pune- Class 100000

G PROCESS COOLING SOLUTIONS

- 74. Adinath Agro Industries- Ketchup cooling system from 120 Deg C to 40 Deg C -60 TR
- 75. Chocolate Demoulding- Raghuleela Innovative Research and Development- Satara- 60 TR
- 76. Vegetable Drying Chambers- Fresh Vegetable dryers
- 77. Papaya Candy drying system- Nakoda group, Nagpur

- 78. Agripure Industries- Bhor- Food process cooling -90 TR Screw Chiller Plant
- 79. Ghodawat Foods- DX AC- Tetra Pack Machine area- 50 TR- Filling
- 80. Ghodawat Foods- DX AC- Tetra Pack Machine area- 32 TR- Pasteurized area.
- 81. Megha Spring Pvt Ltd- Tetra Pack Machine area- 24 Tr- Filling area
- 82. Fleetguard Filters – Dharwad- 80 Tr Screw Chiller- Machine Cooling- Kirloskar Screw
- 83. Tata Auto comp GY Batteries Ltd- Ranjangaon- Battery Port Online Cooling System
- 84. Mahle Behr MAHLE Behr India Private Limited- Noida 157 TR Chiller Plant

H CHILLING PLANT

- 85. Nordex India Pvt Ltd – Chennai -5000Tr Kirloskar air cooled chiller
- 86. Laxmi Snacks Industries- Nadiad- 130 Tr Kirloskar Screw Chiller
- 87. Ghodawat Foods- Kolhapur- 140 X 2 Nos Daikin Screw Chillers
- 88. Agripure Industries- Bhor- Food process cooling – 45X2 (90) TR Screw Chiller Plant
- 89. Fleetguard Filters – Dharwad- 80 Tr Screw Chiller- Machine Cooling- Kirloskar Screw
- 90. MAHLE Behr India Private Limited- chakan- Magnetic Bearing 150 Tr- Office AC
- 91. Mahindra and Mahindra Nashik- 110 TR- Screw Chiller – Kirloskar
- 92. TATA TOYO Chinchwad 110 TR Screw Chiller-Kirloskar
- 93. Maschio Gaspardo India Pvt Ltd- 83 TR- Ranjangaon-Kirloskar Screw Chiller
- 94. Ghodawat Foods- Kolhapur- 140 X 1 Nos Daikin Screw Chillers
- 95. The Automotive Research Association of India- Kothrud- 50 TR
- 96. World Trade Center Nagpur- 2800 TR- Kirloskar Centrifugal Chiller Plant



SOLUTION BASED PROJECT

A EVAPORATIVE COOLING SOLUTIONS- SINGLE STAGE

1. Foods And inns Limited- Nashik - 60000 CFM (Pulp & Juice Processing)-7000 Sq. Ft.
2. Finns Frozen Foods- Nashik- 55000 CFM (Samosa & Nan Processing) - 5000 Sq. Ft.
3. Mother Dairy- Bangalore- 80000 CFM (Pulp & Juice Processing)- 7000 Sq. Ft.
4. Foods And inns Limited- Chittoor- 37000 CFM (Pulp & Juice Processing) - 5000 Sq. Ft.
5. Francoise Compressors Pvt Ltd- 100000 CFM (Manufacturing) - 15000 Sq. Ft.
6. Nilons Enterprises Pvt Ltd- 214000 CFM (Lemon Cutting Area) - 50000 Sq. Ft.
7. Tasty bite Eatables Limited- Yavat- 37000 CFM (Sauce Line) - 4500 Sq. Ft.
8. Tata Auto comp GY Batteries Ltd- Ranjangaon- 25000 CFM (Battery Manufacturing Line) - 4000 Sq. Ft.
9. Laxmi Snacks Pvt Ltd- (Gujarat) - 40000 CFM (Snacks Manufacturing)
10. Getrag transmission- (Gujarat) 270000 CFM- Assembly Area 60000 Sq. Ft.
11. foods and inns (Chittoor) – Ketchup Industries- 160000 CFM
12. ADF Foods Limited (GUJARAT) - 50000 CFM – 6800 Sq. Ft.- Tandoor making
13. Foods And inns Limited- Chittoor- 100000 CFM (Pulp & Juice Processing)- 10000 Sq. Ft.
14. Foods And inns Ltd- Gonde Nashik- 80000 CFM (Pulp & Juice Processing)- 6200 Sq. Ft.
15. Switze International Private Limited- Daman- 20000 CFM- Samosa Patti Making- 2000 Sq. Ft.
16. ADF Foods Limited (GUJARAT) - 50000 CFM – 6800 Sq. Ft.- Kitchen Area
17. Whirlpool India Limited- Single Stage Air Washer- 1000000 CFM- 344000 Sq.ft.
18. Whirlpool India Limited- Single Stage Air Washer- 360000 CFM- 17700 Sq.ft.
19. Fujifilm Sericol India Pvt Ltd- Pune- Single Stage Air Washer– 40000 CFM
20. Hitachi Astemo FIE Pvt Ltd-Chakan- Single Stage Air Washer - 75000 CFMI

B TWO STAGE EVAPORATIVE COOLING

21. Laxmi Snacks Pvt Ltd- (Gujarat) - 40000 CFM (Snacks Manufacturing)
22. Getrag transmission- (Gujarat) 270000 CFM - 60000 Sq. Ft.
23. Laxmi snacks- (Gujarat)- 60000 CFM- Snacks Packing- 9500 Sq. Ft.
24. ADF Foods Limited (GUJARAT) - 50000 CFM – 6800 Sq. Ft.- Tandoor making
25. Megha Fruit Processing Private limited- Tetra Pack Area- 60000 CFM- Sangareddy
26. Schreiber Dynamix Dairies Pvt. Ltd. - Baramati- 60000 CFM- Wrapping Area- 5000 Sq. Ft.

27. Schreiber Dynamix Dairies Pvt. Ltd. - Punjab- 6000 CFM- Wrapping Area-3500 Sq. Ft.
28. Schreiber Dynamix Dairies Pvt. Ltd. - Kuppam- 18000 CFM- Wrapping Area-3500 Sq. Ft.
30. MAHLE Behr India Private Limited- chakan- 22000 CFM- Assembly line- 4000 Sq. Ft.
31. Enpro Industries Pvt Ltd Pune 130000 CFM -30000 Sq.ft. Office & Canteen Area
32. Ghodawat Consumer LLP- 150000 CFM Two Stage- Kolhapur
33. Hilti India Manufacturing Limit- Two stage Evaporative 37000 CFM
34. Hindustan Coca cola beverages Ltd- 175000 CFM- Ambiator
35. Skoda Auto Volkswagen India Pvt Ltd -1000000 CFM- Ambiator
36. CIE Automotive India Pvt Ltd- 45000 CFM- Chakan

C INDUSTRIAL KITCHEN VENTILATIONS SYSTEMS

37. Tasty bite Eatables Limited- 100000 CFM
38. ADF foods Limited- 30000 CFM
39. ADF Foods Limited- 30000 CFM
40. Finns Frozen Foods- Nasik- 40000 CFM
41. Nilons Enterprises Pvt Ltd- Jalgaon- 70000 CFM

D HUMIDITY CONTROLLING SOLUTIONS (30% TO 70%)

41. Cadbury India Limited- Baddi- 20TR
42. Cadbury India Limited- Kolhapur- 70TR
43. Warana Dairy And Agro Industries Limited- Kolhapur- 40 TR
44. Warana Sah. Dudh Utpadak Prakriya Sangh Limited- 50TR
45. Megha Springs Pvt Ltd- Mangalore 30TR
46. Aditya Birla Research & Development Center- Taloja- 30TR
47. Renata Precision Component Pvt Ltd- Kuruli- 33 TR
48. Nilons Enterprises Pvt Ltd- Jalgaon- Masala Packing- 40TR
49. Laxmi Snacks Pvt Ltd- 130TR- Gujarat
50. Nutrivita Foods Pvt Ltd- Pune- 50TR
51. Kelzai Secrets Foods, Roha- Hybrid RH controlling
52. Mubea Automotive Components India Private Limited- 31TR
53. Nordex India Pvt Ltd – Chennai -5000Tr Kirloskar air cooled chiller

CASE STUDY



Client: Adinath Agro

Product: Magic King

Price: 0.4 Cr



Client: TATA

Product: Green Batteries

Price: 0.3 Cr



Client: ADF Foods Limited

Product: Tandoori Naan

Price: 1 Cr



Client: ADF Foods Limited

Product: Punjabi Samosa

Price: 1.2 Cr



Client: Nordex

Product: Nordex

Price: 25 Cr



Client: Laxmi Snacks

Product: Real Namkeen

Price: 3 Cr



Client: Foods and Inns

Product: Madhu Mango Pulp

Price: 1.5 Cr



Client: Mother Dairy

Product: Mother Dairy

Price: 7 Cr



Client: SG

Product: SG

Price: 1.1 Cr



Client: Whirlpool India Ltd

Product: Whirlpool

Price: 2.7 Cr



Client: Sanjay Ghodawat Group

Product: Frustar

Price: 3 Cr



Client: Sanjay Ghodawat Group

Product: Blostar

Price: 2 Cr



Client: Sanjay Ghodawat Group

Product:

Price: 1 Cr



Client: SG

Product: SG

Price: 4 Cr



Client: IK Insulation Group

Product: K-FLEX

Price: 0.4 Cr



Client: Nilon's PVT LTD

Product: Magic King

Price: 0.45 Cr



Client: Mondelez International

Product: Bourn Vita

Price: 0.8 Cr

15
Years

OUR EXECUTION APPROACH



INSTALLATION

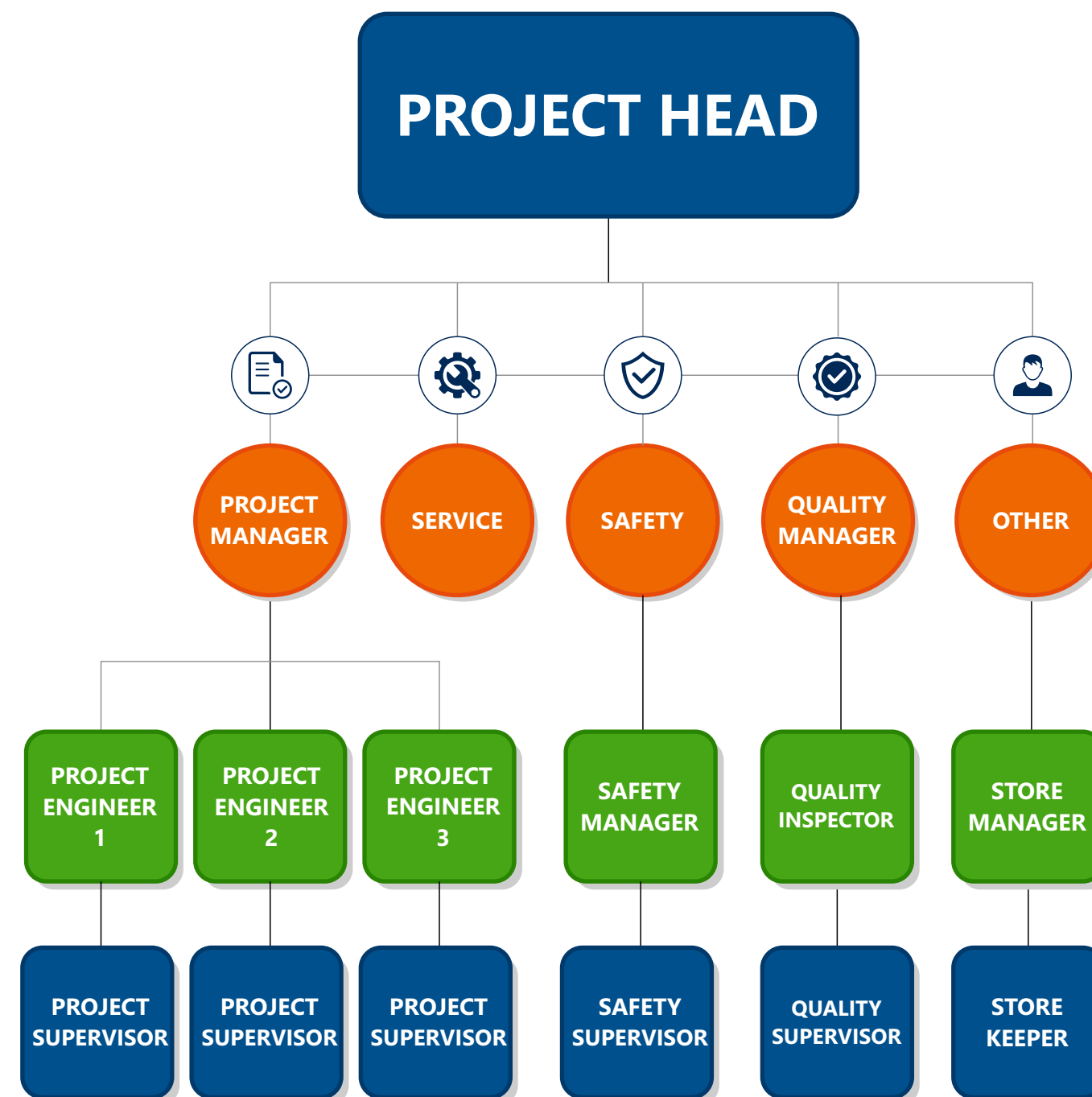


TESTING



COMMISSIONING

SITE TEAM ORG CHART



Project Erection Equipment's



Our Filing Process We Follow

SILVER

GOLD

DIAMOND

OUR TEAM



Project Schedule and Tracking



Our Site Setup



Site TBT & Progress Meeting



OUR AWESOME WORK

Throughout our history we have provided HVAC solutions to some of the world's major manufacturers and industrial companies.



▶ 5000 TR Chiller Plant



▶ 1000 TR DX AHU System



▶ Kirloskar Screw Chiller 400 TR



▶ 4200 TR Air Cooled Chiller Plant



▶ Air Cooled Screw 400TR



▶ HVAC Turnkey with utility



▶ Air Washer 25000 CFM X 3Nos



▶ Air Washer 210000 CFM



▶ Air Washer 100000 CFM



▶ Magnetic Centrifugal Chiller 130 TR



▶ Air Cooled Scroll 50TR Ketchup cooling

OUR AWESOME WORK



► Screw Chiller Plant -140 TR



► Two Stage Evaporative (HMX) - 240000 CFM



► Water Cooled Chiller Plant (Kirloskar Chiller)- 130 TR



► Chiller Plant - Ice water -300TR (Daikin Screw Chiller)



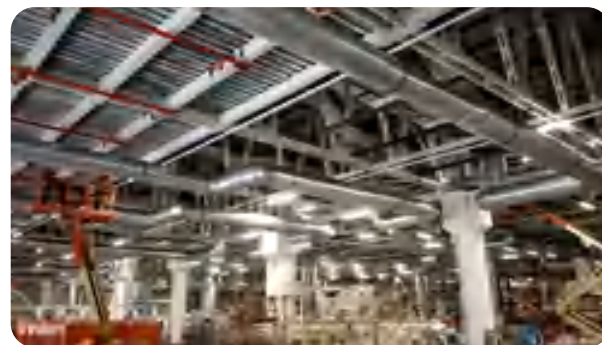
► Water Cooled Chiller Plant (Kirloskar Chiller)-130TR



► Process Cooling with Air Cooled Screw Chiller (Kirloskar)



► Process Cooling VAM Chiller-300TR



► Two Stage Evaporative with Spiral Ducting-11Lakh CFM

33

15
Years

OUR INSTALLATION GALLERY



34

YEAR
2023

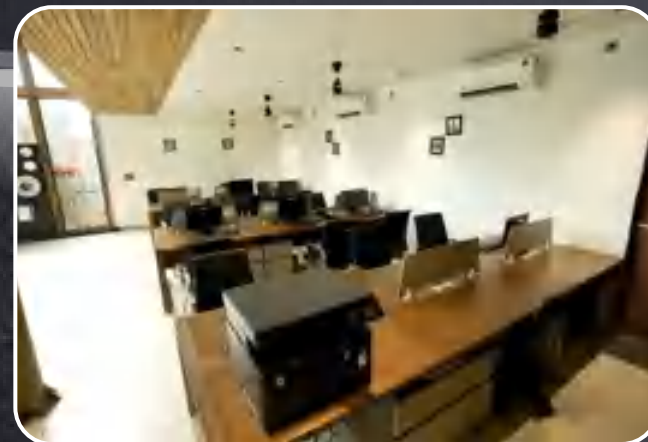
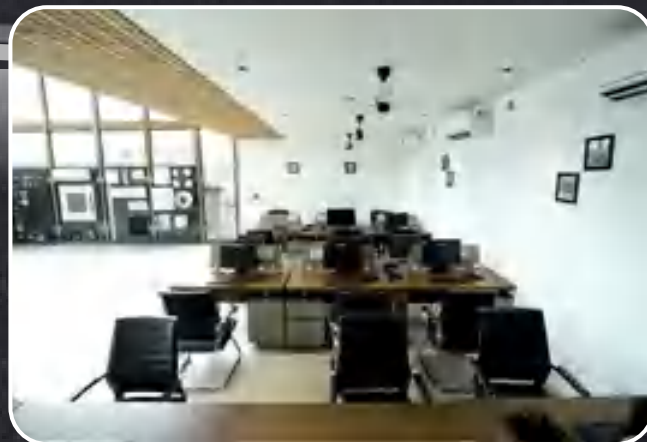


Completed first MEP project for a 5500 sq. ft. corporate office and installed a brine chilling plant at -4°C with stainless steel piping.

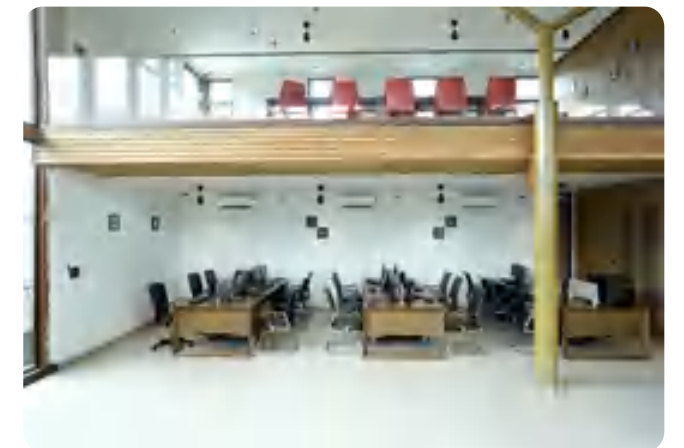
► MEP Project - Corporate
Office Area 5500 Sq-Ft



► Work Station



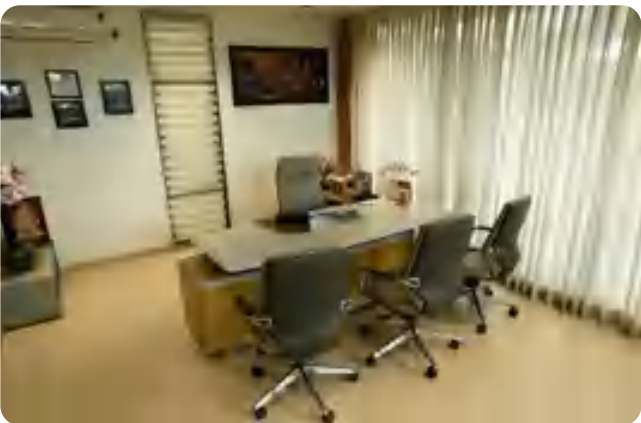
► Reception



► Conference



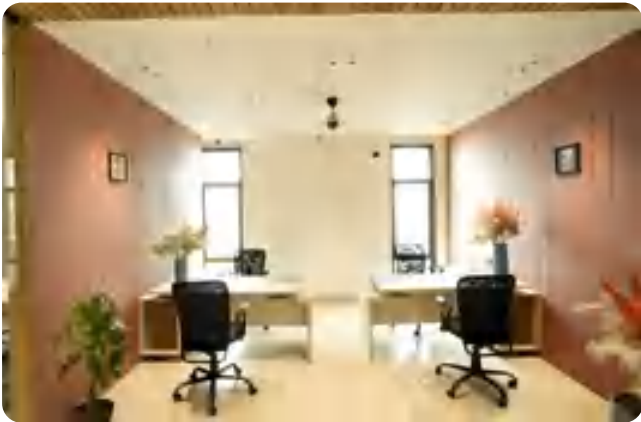
► Director Cabin



► Director Room



► Manager Desk



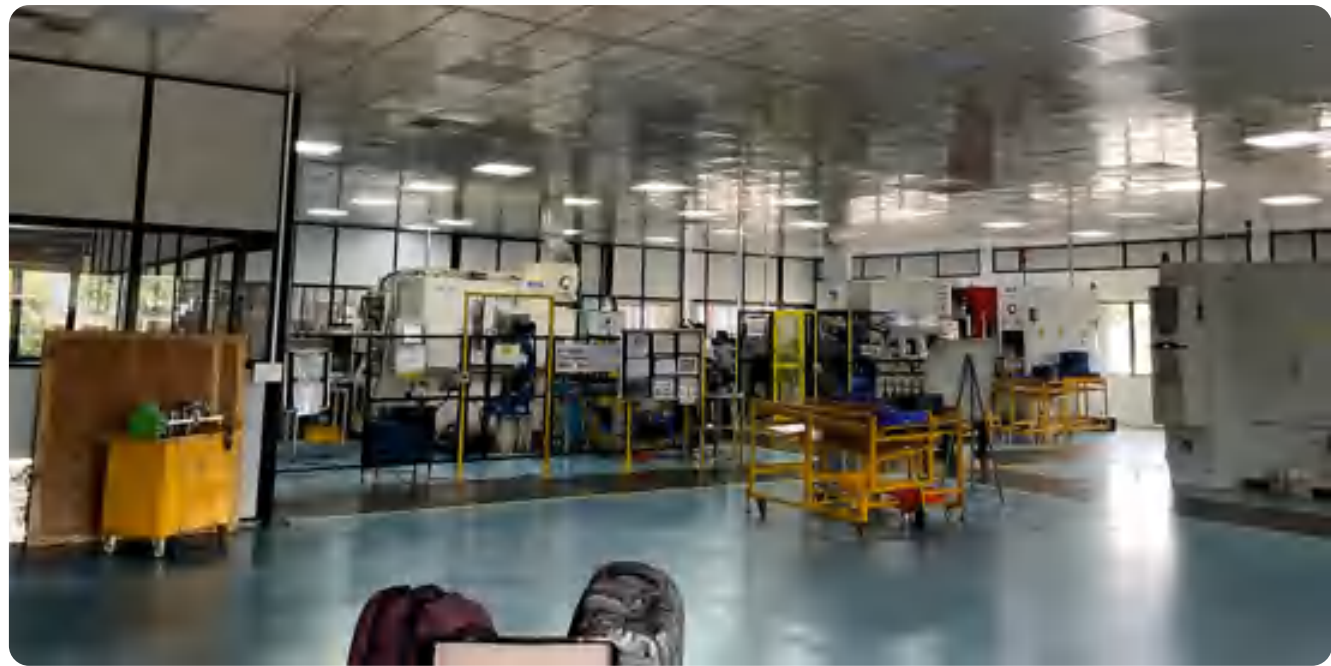
► Cubical



TWO STAGE EVAPORATIVE (HMX)-40K CFM



Ceiling Suspended Exhaust



GLYCOL CHILLER PLANT-MINUS 4 DEG C (DAIKIN)



Chiller Plant with SS Pipeline



Pumping Station with Hot/Cold well

VRF SYSTEM - (MITSUBISHI)

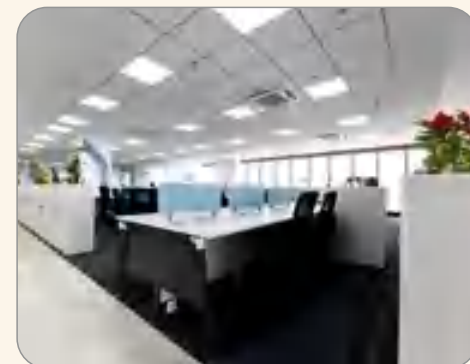
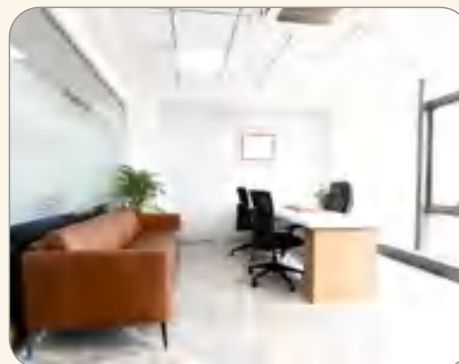
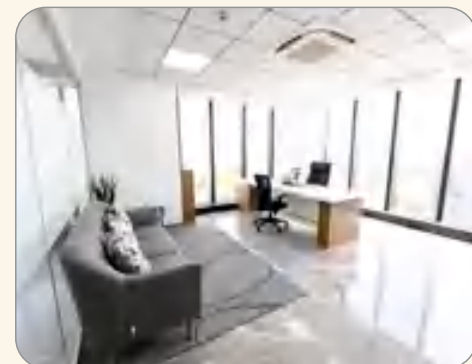


YEAR
2022



Expanded further with commercial offices covering
30000 sq. ft.

► VRF System (Daikin) -100 HP |

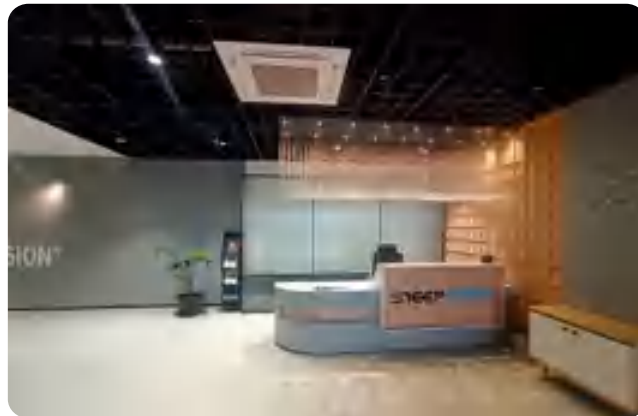


YEAR 2022

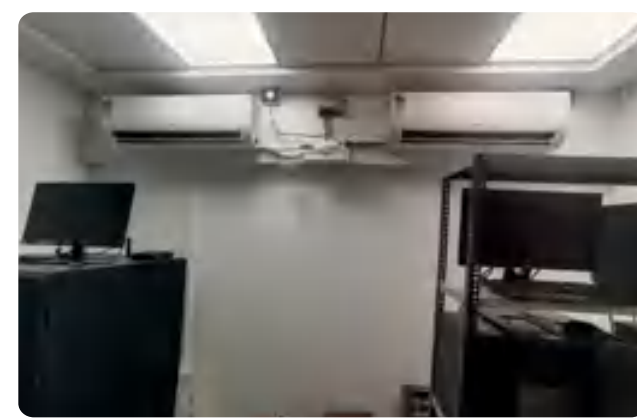


Expanded further with commercial offices covering
30000 sq. ft.

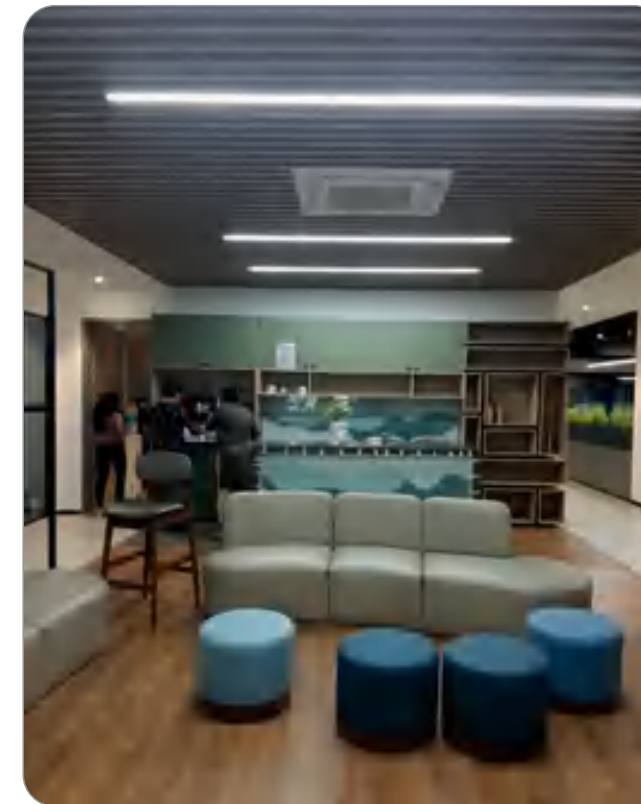
► Reception Area



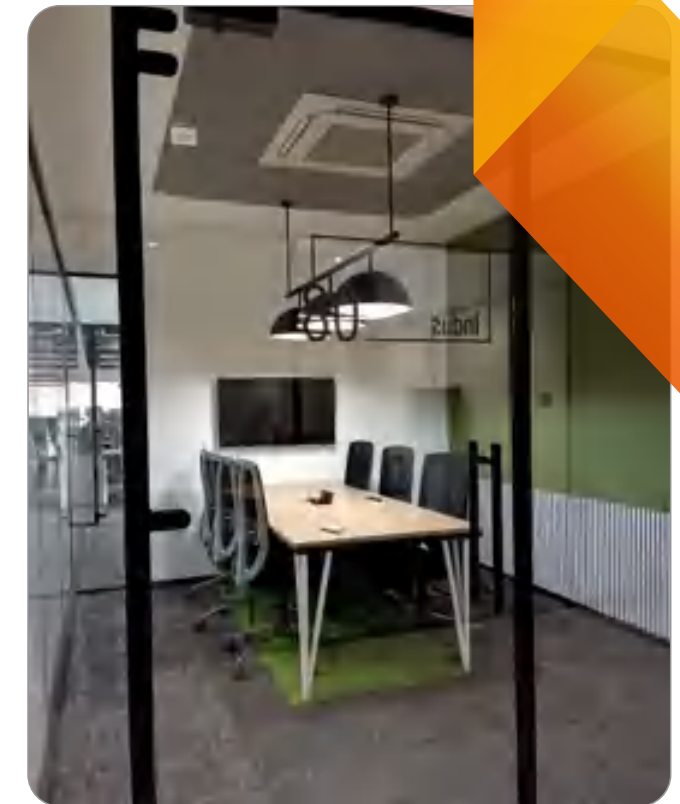
► VRF System (LG) - 110 HP



► Waiting Area



► Meeting Room



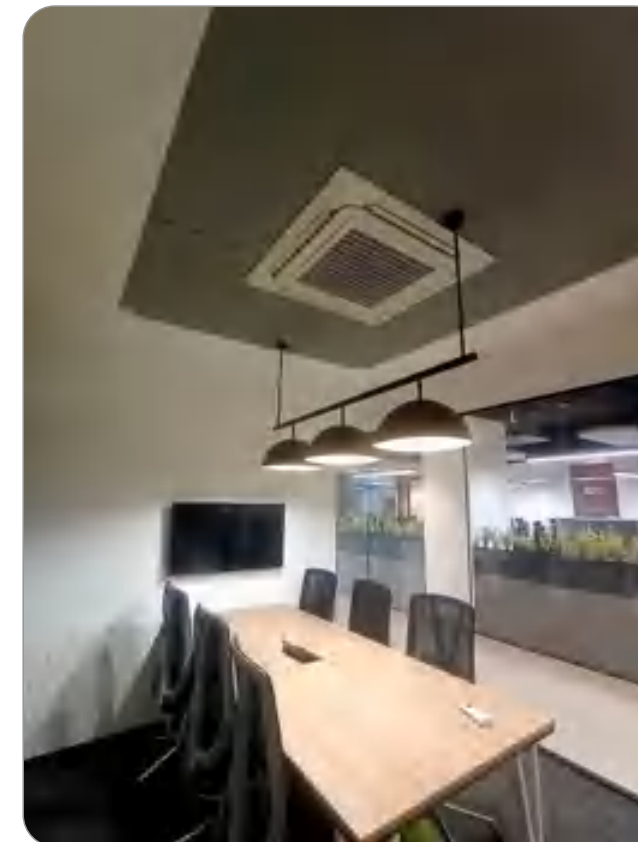
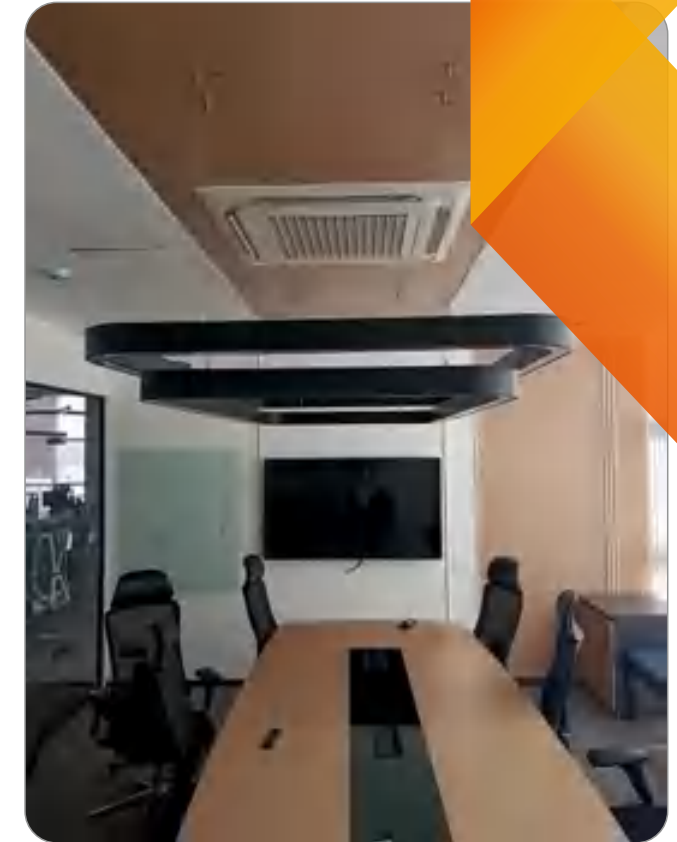
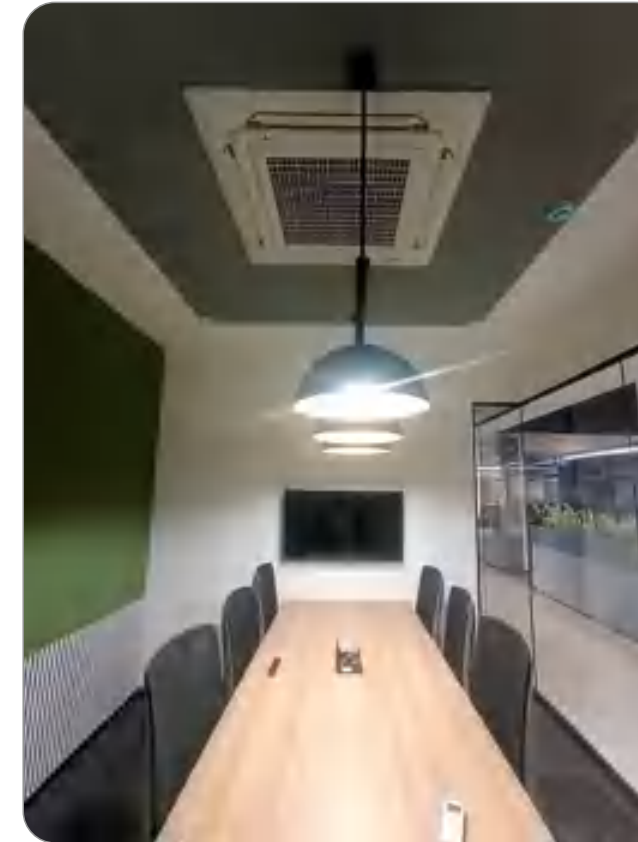
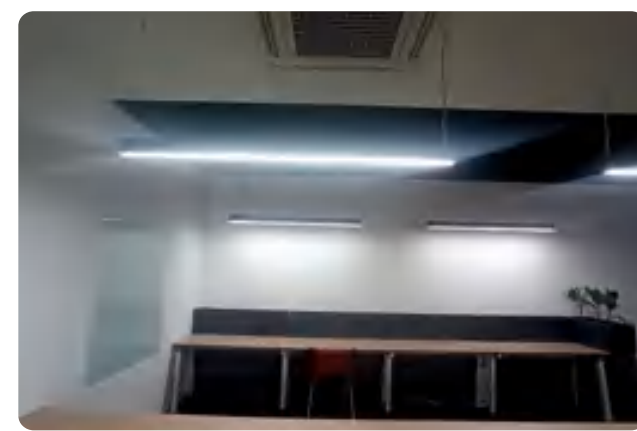
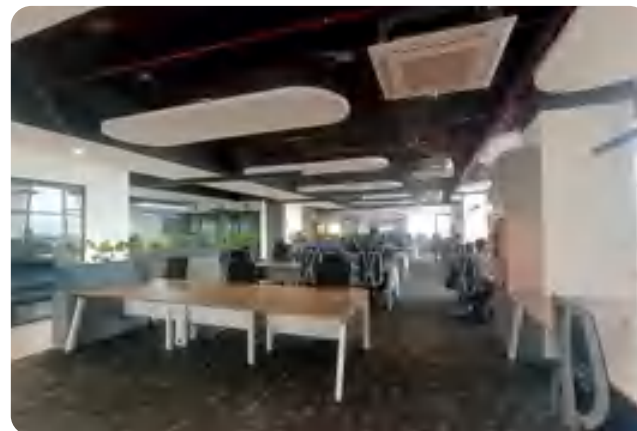
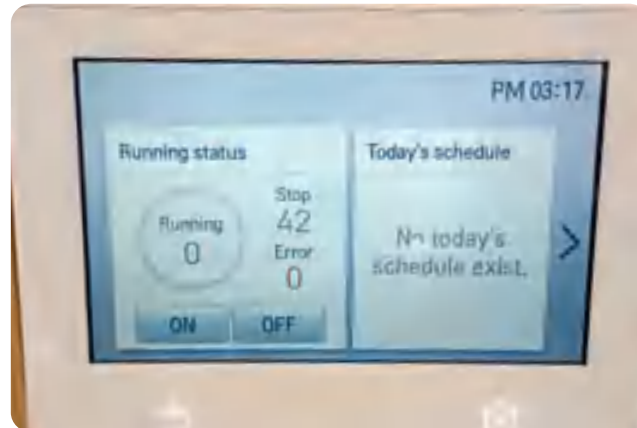
► Open office Area



YEAR
2022



Expanded further with commercial offices covering
30000 sq. ft.



YEAR
2021



Secured a record 22 Cr order from Nordex, expanded with a 5000 TR corporate office (5500 sq. ft.), and underwent a brand reformation.

► 5000 TR Air Cooled Chiller Plant
- (Kirloskar Chiller)



► Chilled water AHU with Lower Return



► DX AHU -900 TR



YEAR
2021



Secured a record 22 Cr order from Nordex, expanded with a 5000 TR corporate office (5500 sq. ft.), and underwent a brand reformation.

▶ VRF System- 200 HP (Mitsubishi)

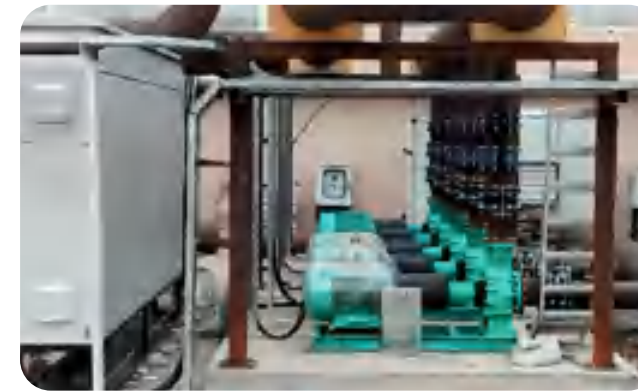


▶ 3200 TR Chiller Plant + Carrier VRF-300 HP + DX AHU -900 TR



51

▶ Air Cooled Chiller Plant -3200 TR



▶ Air Cooled Screw Chiller-400TR



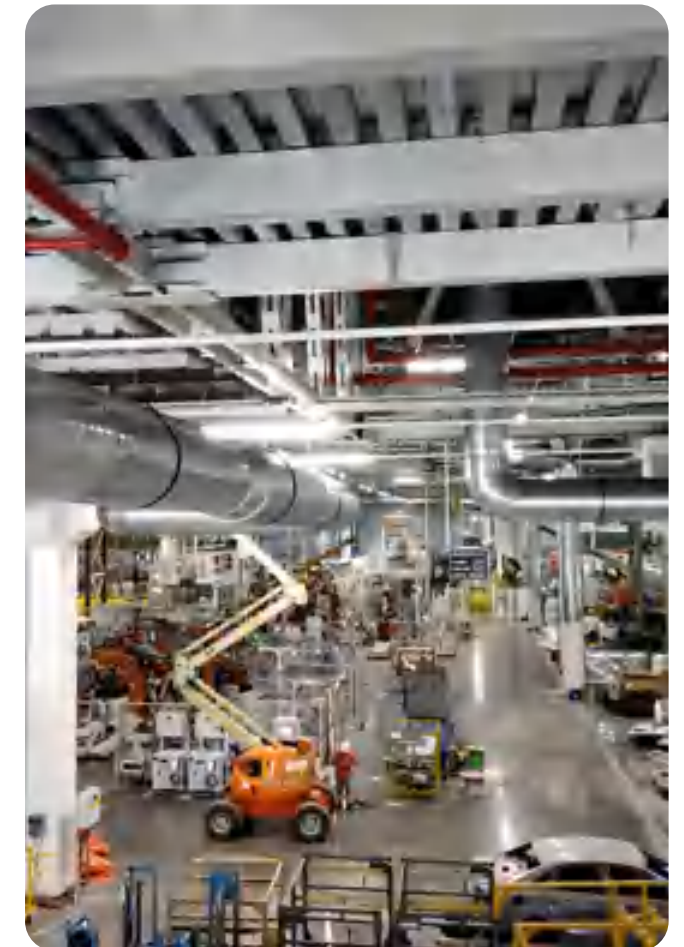
52

YEAR
2020



Received a single order of 9 Cr for VW 2.0 Expansion in collaboration with ATE Business partner.

▶ Two Stage Evaporative
- 11 Lakh CFM



YEAR
2020



Received a single order of 9 Cr for VW 2.0 Expansion in collaboration with ATE Business partner.

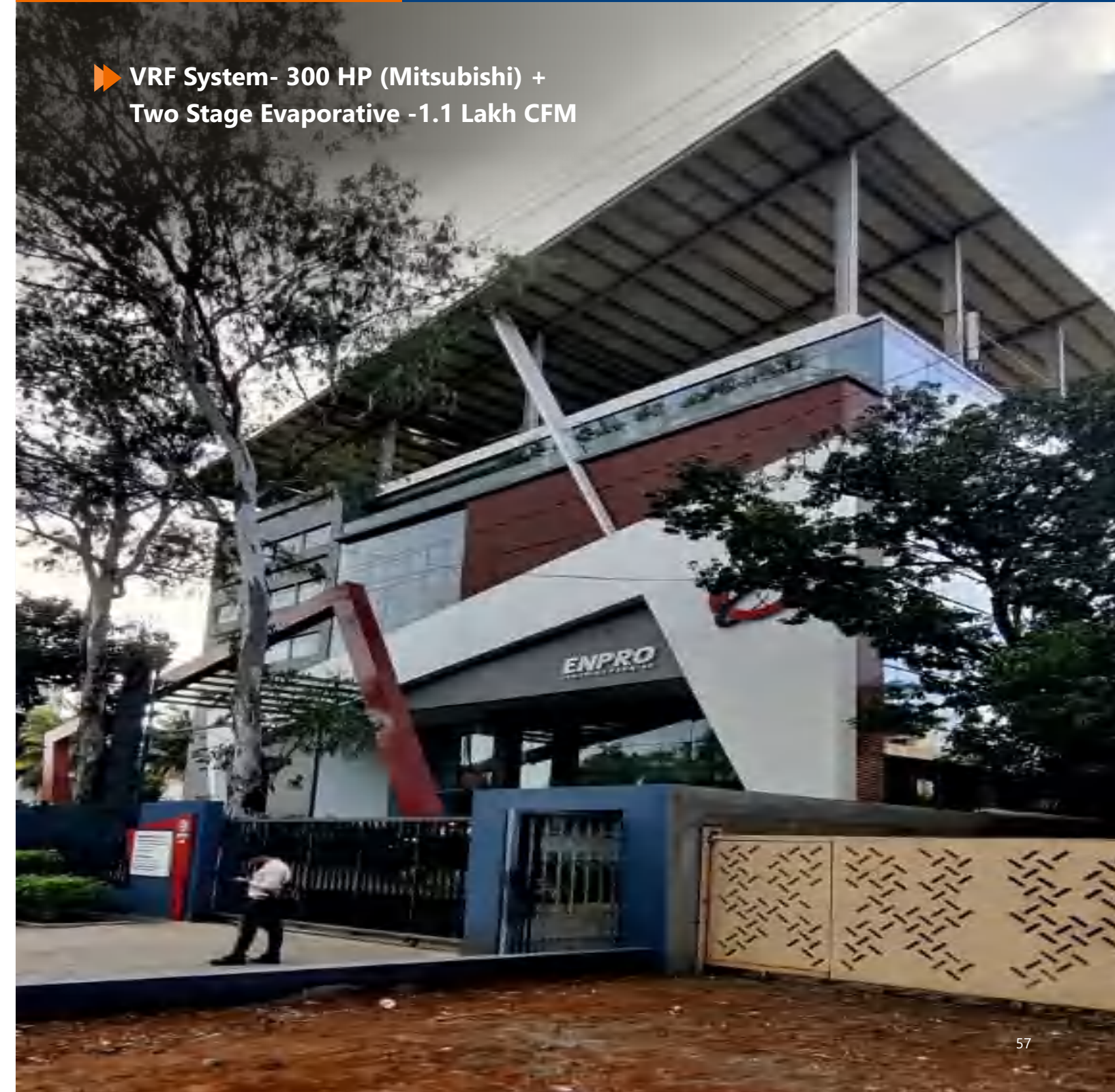


YEAR
2019



Secured a Rs. 7 Cr order from Sanjay Ghodawat Group, implementing a Platinum-rated green building HVAC system for Enpro Industries.

► VRF System- 300 HP (Mitsubishi) +
Two Stage Evaporative -1.1 Lakh CFM



► Two Stage Evaporative | Capacity-1.8 Lakh CFM



► DX AHU - 100 TR | Chiller Plant -300 TR



YEAR 2019



Secured a Rs. 7 Cr order from Sanjay Ghodawat Group, implementing a Platinum-rated green building HVAC system for Enpro Industries.



► Chiller Plant -260 TR



► Water Cooled Chiller- Daikin 120x2 Nos



YEAR
2018



Received a Rs. 2.5 Cr order from Getrag Transmission, a Ford Group Company, and a second order of Rs. 3 Cr from Whirlpool.

► Single Stage Evaporative Cooling System- 15 lakh CFM

Whirlpool
CORPORATE



YEAR
2017



Successfully delivered multiple process cooling projects.

► Two Stage Evaporative
30K x 2 Nos



YEAR 2017



Successfully delivered multiple process cooling projects.

► Magnetic Centrifugal Chiller- 130 TR (Kirkoskar)



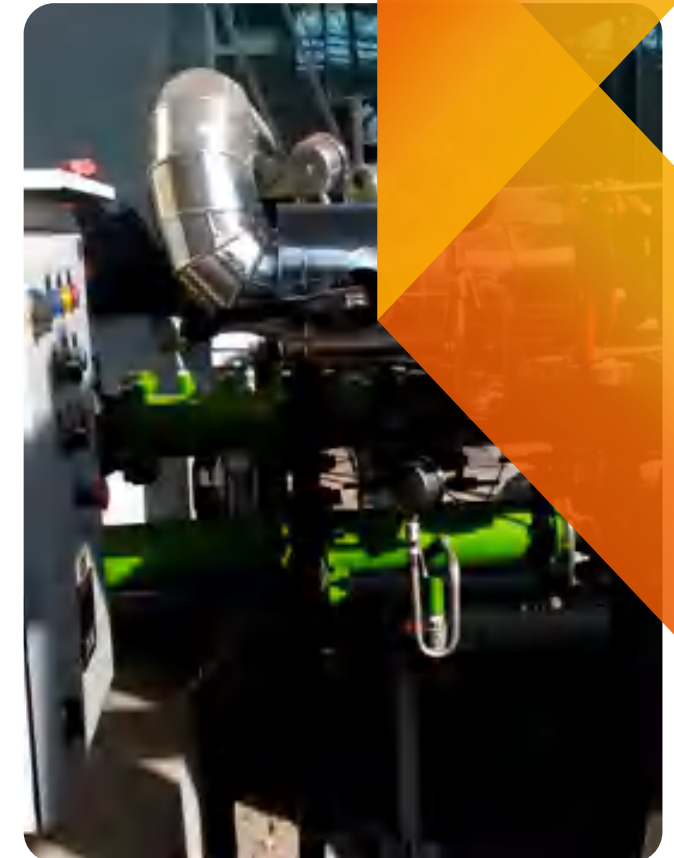
► Process Cooling Tunnel For Rubber Application



► Air Cooled with Hot & Cold well- 45 TR X2 Nos



► Clean Room - Class -100000



► Two Stage Evaporative - 2.4 Lakh (HMX)



YEAR
2016



Dedicated the year to process cooling solutions, achieving milestones in Single Stage and Two-stage Evaporative Cooling totalling 10 Lakh CFM.

▶ Single Stage- 1 Lakh CFM
Two Stage -60K CFM



▶ Kitchen Exhaust Blower
30K X 2 Nos.



▶ Two Stage Evaporative-
CFM - 30K x 2 Nos.



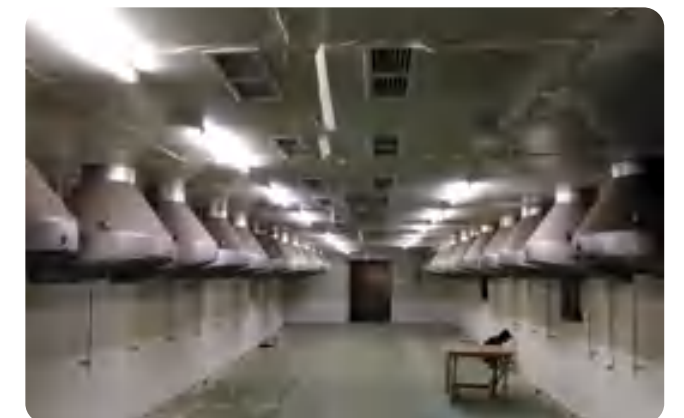
▶ Air Washer-25K CFM



▶ Chiller Plant- 121 TR (Kirloskar Chiller)



▶ Tandoor Area Ventilation



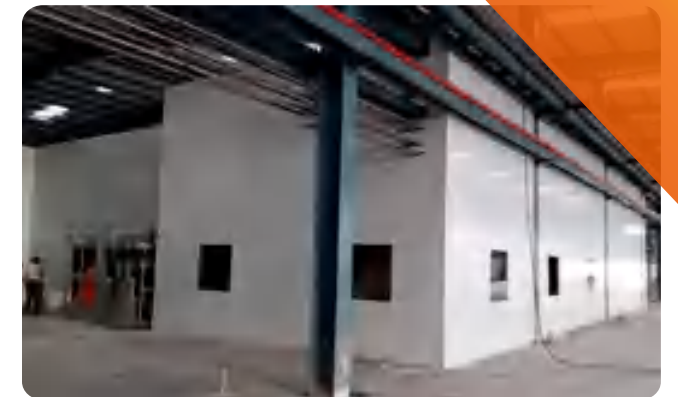
YEAR 2016



Dedicated the year to process cooling solutions, achieving milestones in Single Stage and Two-stage Evaporative Cooling totalling 10 Lakh CFM.



► Air Washer -15k x 4Nos



YEAR 2016



Dedicated the year to process cooling solutions, achieving milestones in Single Stage and Two-stage Evaporative Cooling totalling 10 Lakh CFM.

▶ HVAC & Puff Panelling Work



▶ Two Stage Evaporative-60K CFM (HMX)



▶ Chiller Plant- 45 TR x 2 (Kirloskar)



▶ Pump Skid



▶ Chiller Plant- 120 TR (Kirloskar)



▶ Kitchen Ventilation



▶ Pump Skid with Hot & Cold well



▶ Two Stage Evaporative-30K CFM



YEAR
2015



Achieved a significant milestone with the first major order of 2.5 Cr from a well-known snack industry.



▶ Chiller Plant 130 TR

▶ Kirloskar Screw Chiller 120 TR



YEAR 2015



Achieved a significant milestone with the first major order of 2.5 Cr from a well-known snack industry.

► Air Washer 40000 CFM



► Screw Chiller



► SCADA Based Electrical Panel



► AHU with Hot / Cold Well



► Two Stage Evaporative- 30K CFM x 2



YEAR
2014



Diversified into HVAC turnkey projects.

▶ Single stage Air washer 15k CFM
& 20k CFM x 2



▶ DX AHU



▶ DX AHU



YEAR
2013



Formed a strategic association with Mitsubishi for Air Conditioning and secured a dealership with Kirloskar Chillers Pvt Ltd.cts

► **Single Stage Evaporative
30K x 2 Nos**

► **Single Stage Air Washer 30K X 2 Nos**

► **Clean Room AHU**

► **AHU with Dust Collector**



YEAR
2013



Formed a strategic association with Mitsubishi for Air Conditioning and secured a dealership with Kirloskar Chillers Pvt Ltd.cts



YEAR 2012



Executed a major project of 1000 Hp in VRF Air Conditioning, solidifying partnerships with two prominent brands.

► Hot Air Exhaust System



► Kitchen Ventilation



► Ventilation



YEAR 2011



Expanded to a 1000 sq. ft. office, grew the team to 20, and forged a pivotal partnership with Warana as a key account

► DX AHU



► DX AHU, Clean Room- ISO-100000



YEAR
2010



Secured a significant order from the food processing industry, marking a milestone of 2.1 lakh CFM.

► Single Stage Evaporative-
2.1 Lakh CFM



YEAR 2010



Secured a significant order from the food processing industry, marking a milestone of 2.1 lakh CFM.



► DX AHU



► Two Stage Evaporative- 40K CFM x 5 Nos.



YEAR 2009



Initiated our first order journey with Cadbury India Limited.

► Precision Air Condition Emerson make



► Office Air Conditioning



OUR CLIENTELE



OUR CLIENTELE

